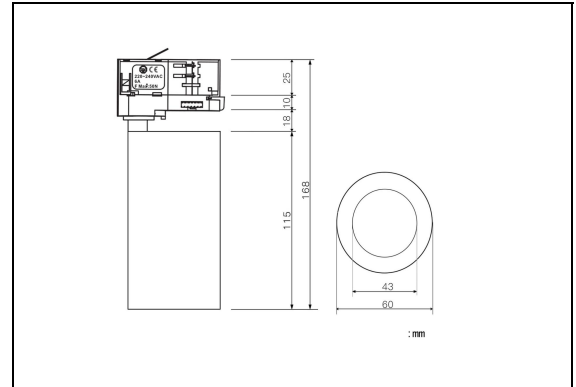


# Klem S2 Schienenstrahler

Klem12 W S2 (DOL)



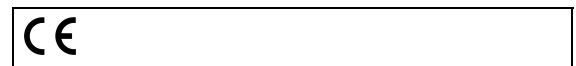
**CITIZEN**  
LED Chip

**RXPOWER**  
LED Treiber

**Dimmer**  
am Lampengehäuse  
Dimm Optionen

**Aluminium**  
Gehäuse

**weiß schwarz**  
Farbe



## Produkt Beschreibung

LED Schienenstrahler 12W

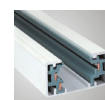
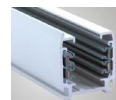
Hohe CRI, 2700K/3000K/4000K Ra>90 Ra>97

Abstrahlwinkel 15° 24° 36° 50° Innenanwendung

## Technische Daten

Artikelnummer:	Klem12WS2 (DOL)
Watt:	12W
Volt:	220~240V~50/60Hz
Leistungsfaktor:	>0.92
Abstrahlwinkel:	15° 24° 36° 50°
Lumen:	Dim5~100% Max1100lm (±100)
Farbtemperatur:	2700K/3000K/4000K
Farbwiedergabeindex:	CRI ≥90 CRI>97
Adapter:	4-Kabel/ 3-Kabel / 2-Kabel optional
Dimm Optionen:	Dimmer on lamp
Gewicht:	0.52kg
Material:	Aluminium
Farbe:	weiß oder schwarz
Arbeitstemperatur:	(-20~40 °C)
Aufbewahrungstemperatur:	(-20~80 °C)
Lebensdauer:	50000 Std.
Zertifikate:	CE-EMC, CE-LVD
Garantie:	5 Jahre
Testberichte:	IES file/ spectrum chart

## Befestigungs Optionen



4 Kabel ( 3-Phase)

3 Kabel ( 1-Phase)

2 Kabel ( 1-Phase)



Surface mounted without rails

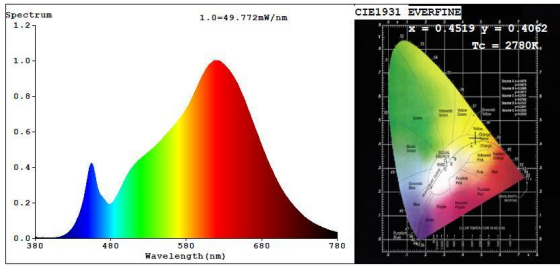
Verpackung: 30Stk. 15.5kg/KTN 47.5x30x40.5cm V14.5

**55,80€**

\*Alle technischen Daten unterliegen industriellen Messtandards und Toleranzen.

**Spectrum Test Report**

2700K



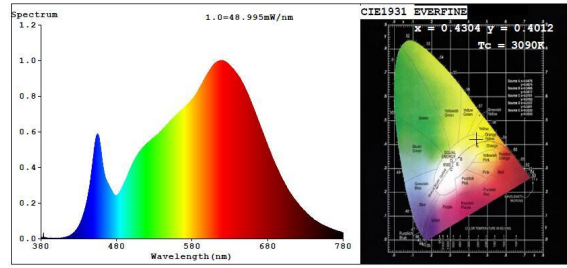
**Color Parameters:**

Chromaticity Coordinate:  $x=0.4519$   $y=0.4062$   $u'=0.2593$   $v'=0.5245$   
 $T_c=2780K$  (Duv=-0.0009) Dominant WL:Ld =584.1nm Purity=57.6%  
 Red Ratio:R=27.8% Peak WL:Lp=618.0nm HWL:Lhd=147.6nm  
 Render Index:Ra=94.1  
 R1 =95 R2 =98 R3 =99 R4 =95 R5 =95 R6 =97 R7 =91  
 R8 =82 R9 =62 R10=95 R11=97 R12=87 R13=96 R14=99 R15=90

**Photo Parameters:**

Flux = 2300 lm Eff. : 81.01 lm/W Fe = 8.137 W

3000K



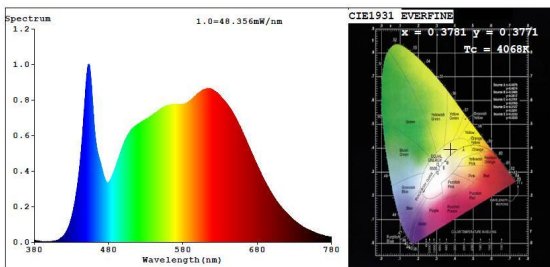
**Color Parameters:**

Chromaticity Coordinate:  $x=0.4304$   $y=0.4012$   $u'=0.2476$   $v'=0.5193$   
 $T_c=3090K$  (Duv=-0.0002) Dominant WL:Ld =582.5nm Purity=49.6%  
 Red Ratio:R=25.6% Peak WL:Lp=619.5nm HWL:Lhd=169.1nm  
 Render Index:Ra=94.3  
 R1 =95 R2 =97 R3 =99 R4 =95 R5 =95 R6 =96 R7 =93  
 R8 =85 R9 =66 R10=93 R11=96 R12=81 R13=96 R14=99 R15=91

**Photo Parameters:**

Flux = 2477 lm Eff. : 85.92 lm/W Fe = 8.635 W

4000K



**Color Parameters:**

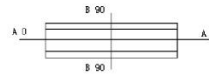
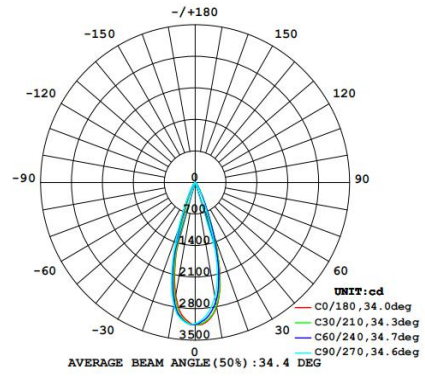
Chromaticity Coordinate:  $x=0.3781$   $y=0.3771$   $u'=0.2234$   $v'=0.5014$   
 $T_c=4068K$  (Duv=0.0008) Dominant WL:Ld =578.3nm Purity=26.6%  
 Red Ratio:R=21.1% Peak WL:Lp=453.7nm HWL:Lhd=23.0nm  
 Render Index:Ra=94.1  
 R1 =95 R2 =96 R3 =96 R4 =95 R5 =94 R6 =93 R7 =96  
 R8 =89 R9 =71 R10=90 R11=95 R12=73 R13=95 R14=98 R15=92

**Photo Parameters:**

Flux = 2579 lm Eff. : 88.72 lm/W Fe = 8.857 W

Original full IES file sent on requested (36°)

**LUMINOUS INTENSITY DISTRIBUTION DIAGRAM**



## Weitere Details

